

# Micro Gear Pump With Brushed DC Motor - Precision, Efficiency & Performance

1

## High Precision Flow

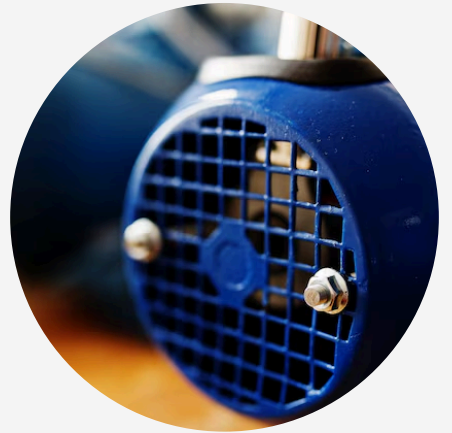
Zhuhai Chenhui Technology Co., LTD offers a Micro Gear Pump With Brushed DC Motor, ensuring high precision flow, reliable performance, and efficiency for industrial and medical applications.



2

## Compact & Lightweight

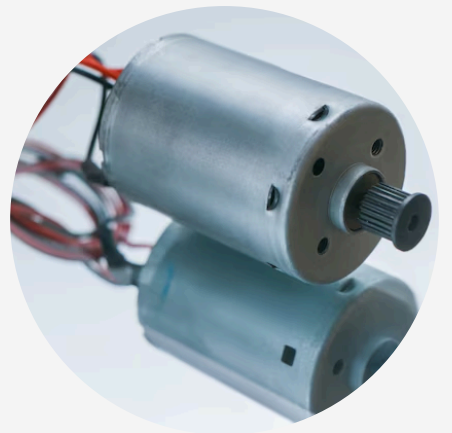
Zhuhai Chenhui Technology Co., LTD offers a Micro Gear Pump With Brushed DC Motor, designed to be compact & lightweight, ensuring efficient performance for precise fluid transfer applications.



3

## Low Noise & Vibration

Zhuhai Chenhui Technology Co., LTD offers a Micro Gear Pump With Brushed DC Motor, featuring low noise & vibration, ensuring smooth, efficient, and precise fluid transfer in various applications.



4

## Long Service Life

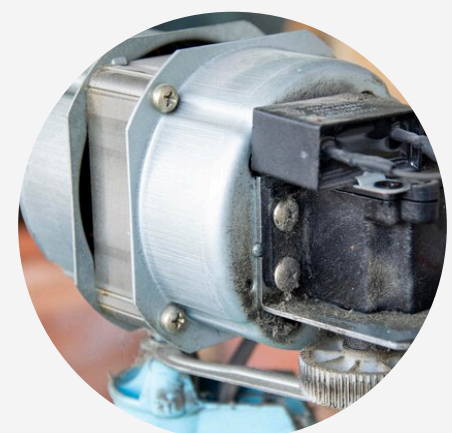
Zhuhai Chenhui Technology Co., LTD provides a Micro Gear Pump With Brushed DC Motor, designed for long service life, ensuring reliable, efficient, and precise fluid transfer across industries.



5

## Versatile Applications

Zhuhai Chenhui Technology Co., LTD offers a Micro Gear Pump With Brushed DC Motor, featuring versatile applications for medical, chemical, and industrial fluid transfer with precision and efficiency.



# Micro Gear Pump With Brushed DC Motor—High-Performance Fluid Transfer Solution

A [Micro Gear Pump With Brushed DC Motor](#) is an efficient and reliable solution for precise fluid transfer in various industries. Manufactured by Zhuhai Chenhui Technology Co., LTD, this pump is designed to deliver consistent flow, high efficiency, and durability.

Whether used in medical devices, chemical processing, or lubrication systems, this pump ensures smooth operation with minimal maintenance.

## ***Key Benefits of Micro Gear Pump With Brushed DC Motor***

### 1. Precise and Stable Flow

The Micro Gear Pump With Brushed DC Motor offers accurate and stable fluid transfer, making it ideal for applications requiring precision. Its compact design allows for a steady flow rate, reducing pulsation and ensuring uniform fluid delivery.

### 2. High Efficiency and Performance

Equipped with a brushed DC motor, this pump provides high torque and efficiency, ensuring reliable performance even in demanding environments. Its powerful 60W motor ensures smooth operation, making it a preferred choice for industries requiring consistent liquid handling.

### 3. Compact and Lightweight Design

Designed for space-saving applications, the micro gear pump features a compact and lightweight structure, allowing easy installation in confined spaces. Despite its small size, it delivers powerful performance, making it ideal for portable and small-scale fluid transfer systems.

### 4. Low Noise and Smooth Operation

This micro gear pump operates with minimal noise, making it suitable for noise-sensitive environments such as medical equipment and laboratory applications. The magnetic drive system eliminates mechanical contact, reducing wear and tear while ensuring smooth operation.

### 5. Wide Range of Applications

The Micro Gear Pump With Brushed DC Motor is widely used in industries such as:

- [Medical and Laboratory Equipment](#): Precise fluid handling for diagnostic devices.
- [Chemical Processing](#): Safe and efficient transfer of various chemicals.
- [Lubrication Systems](#): Reliable oil and lubricant circulation.
- [Cooling Systems](#): Consistent liquid cooling for industrial machinery.

## **Why Choose Zhuhai Chenhui Technology Co., LTD ?**

As a leading manufacturer of precision pumps, Zhuhai Chenhui Technology Co., LTD delivers high-quality micro gear pumps with advanced technology and durable materials. Our pumps ensure efficiency, reliability, and long service life, making them the perfect choice for your fluid transfer needs.

[For more information about the company.](#)

Company Name: **Zhuhai Chenhui Technology Co., LTD**

Address: **Honghui 3rd Road, Hongqi, Jinwan, Zhuhai, 519000, China**

Contact Phone: **+86 13425066761**

Contact Name: **Grace Lee**

Contact Email: **sales@zhchenhui.com**

Website url: **<https://www.chenhuipump.com/>**