

Applications of a 5 Axis Rotary Table

Aerospace Component Manufacturing

In aerospace, precision is paramount. A 5 Axis Rotary Table is ideal for machining intricate parts like turbine blades, impellers, and structural components with high accuracy.

01

02

Automotive Industry

Automotive manufacturers rely on 5 Axis Rotary Tables to produce complex components such as engine parts, transmission systems

Medical Equipment Production

Medical devices and implants often feature intricate designs. 5 Axis machining allows for the efficient production of prosthetics, surgical instruments

03

04

Energy Sector

The energy industry benefits from 5 Axis Rotary Tables in creating components for wind turbines, gas turbines, and other energy-generation equipment.

Tool and Die Making

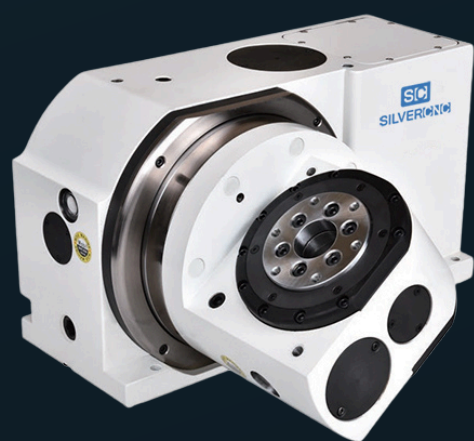
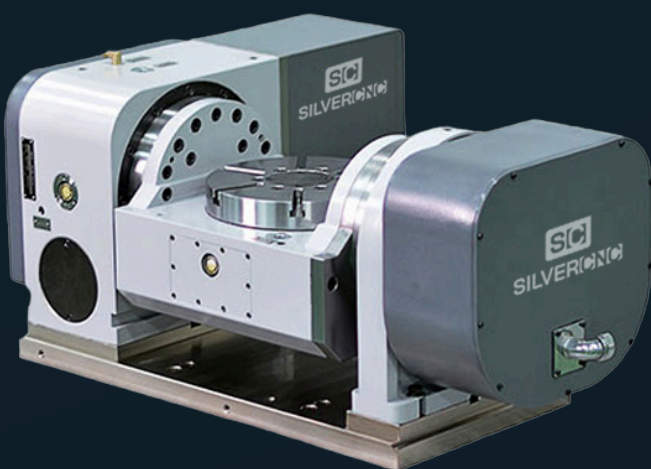
5 Axis Rotary Tables streamline the creation of molds, dies, and tooling with intricate features. This reduces lead times and enhances the precision of custom designs.

05

06

Custom Part Manufacturing

For industries requiring unique or prototype components, 5 Axis Rotary Tables provide the versatility to handle specialized tasks efficiently.



Find out more at:

WWW.SILVERCNC.COM/PRODUCT/5-AXIS-ROTARY-TABLE

A **5 Axis Rotary Table** is a game-changing component in modern CNC machining, offering unmatched flexibility and precision. By enabling movement along five axes, this tool transforms traditional machining processes, allowing for the creation of intricate designs and complex geometries. Silvercnc's advanced 5 Axis Rotary Tables are designed to meet the highest standards of performance and reliability.

What is a 5 Axis Rotary Table?

A **5 Axis Rotary Table** provides rotational movement on two additional axes beyond the typical X, Y, and Z axes. This capability allows CNC machines to handle more intricate machining tasks, such as creating complex parts with minimal repositioning.

Key Applications of a 5 Axis Rotary Table

1. Aerospace Component Manufacturing

In aerospace, precision is paramount. A 5 Axis Rotary Table is ideal for machining intricate parts like turbine blades, impellers, and structural components with high accuracy.

2. Automotive Industry

Automotive manufacturers rely on 5 Axis Rotary Tables to produce complex components such as engine parts, transmission systems, and custom molds, ensuring tight tolerances and exceptional quality.

3. Medical Equipment Production

Medical devices and implants often feature intricate designs. 5 Axis machining allows for the efficient production of prosthetics, surgical instruments, and dental implants with precise contours and smooth finishes.

4. Energy Sector

The energy industry benefits from 5 Axis Rotary Tables in creating components for wind turbines, gas turbines, and other energy-generation equipment. These parts require complex geometries and robust durability.

5. Tool and Die Making

5 Axis Rotary Tables streamline the creation of molds, dies, and tooling with intricate features. This reduces lead times and enhances the precision of custom designs.

6. Custom Part Manufacturing

For industries requiring unique or prototype components, 5 Axis Rotary Tables provide the versatility to handle specialized tasks efficiently.

Advantages of Silvercnc 5 Axis Rotary Tables

- **Unmatched Precision:** Achieve complex machining tasks with superior accuracy.
- **Versatility:** Handle a variety of materials and designs effortlessly.
- **Efficiency:** Reduce setup times and increase productivity with fewer repositionings.
- **Durability:** Built with high-quality materials to ensure long-term reliability.

Revolutionize Your CNC Operations with Silvercnc

The 5 Axis Rotary Table is essential for industries demanding precision and efficiency. At Silvercnc, we offer cutting-edge solutions tailored to meet diverse machining needs. Discover the transformative power of our 5 Axis Rotary Tables and explore their wide-ranging applications by visiting [Silvercnc](https://silvercnc.com). Elevate your CNC machining to the next level today!

Visit <https://tinyurl.com/59r5p3cj> for more information about **5 Axis Rotary Table** and call now at **+86 180 9892 0890** or email us at liuxuan@silvercnc.com